



# ISOLED®

CUSTOMISED LIGHT SOLUTIONS

## 2023 Infrared incl. illuminated frame



[WWW.ISOLED.AT](http://WWW.ISOLED.AT)



[WWW.ISOLED.DE](http://WWW.ISOLED.DE)



[WWW.ISOLED.CH](http://WWW.ISOLED.CH)



# ISOLED® EUROPEAN BRAND SINCE 2008

Our company consists of professional visionaries and motivated doers, who continuously drive forward the technical developments in LED technology and set new accents and trends with their innovative ideas and solutions.

Since 2008, we have been offering our customers and partners a standardised LED product range with well over 2,830 items, intelligent LED project lighting solutions as well as customised production of sustainable LED lighting solutions according to individual specifications. In the design of our wide range of products and services, we are guided by the needs of our customers.

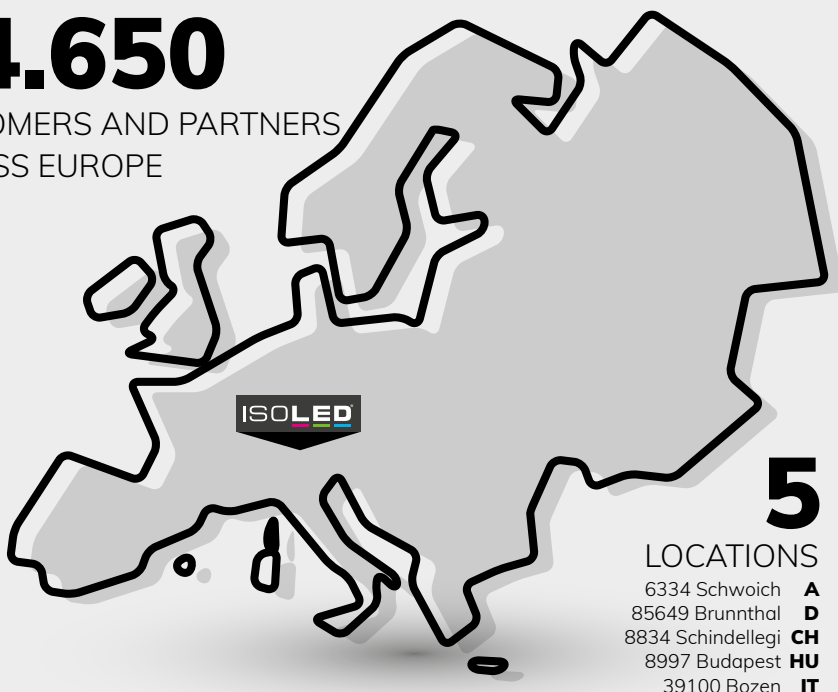
When creating our wide range of products and services, we base our actions both on

- » Requirements of our customers as well as on the
- » technical progress within LED technology.

Excellent quality, highly competent advice from our staff, as well as sustainable growth of our company make sure our partners can reliably cover their needs with the latest LED lighting components and systems.

## 14.650

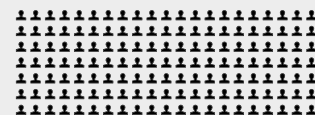
CUSTOMERS AND PARTNERS  
ACROSS EUROPE



**Specialist and wholesale trade  
trade and commerce**

**Commercial wholesale customers  
Architects and planners**

**Industrial customers  
Local authorities**



## 170

EMPLOYEES

## 12

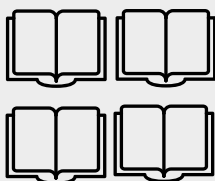
NATIONS

## 4.121.688

WEBSITE CALL/YEAR

**+ 95.000** @

SUBSCRIBE TO NEWSLETTER



## 1088

PAGES

## 35.000

PIECE/EDITION

## 5

LANGUAGES

DE EN FR IT HU

**ISOLED® Austria technology and logistics center**

FIAl Handels GmbH | Egerbach 48 | A-6334 Schwoich | Tel: +43 5372 219999 | E-Mail: office@isoled.at

ISOLED® AUSTRIA  
[www.isoled.at](http://www.isoled.at)

ISOLED® GERMANY  
[www.isoled.de](http://www.isoled.de)

ISOLED® SWITZERLAND  
[www.isoled.ch](http://www.isoled.ch)

ISOLED® FRANCE  
[www.isoled.fr](http://www.isoled.fr)

ISOLED® ITALY  
[www.isoled.it](http://www.isoled.it)

ISOLED® HUNGARIA  
[www.isoled.hu](http://www.isoled.hu)



Dear ladies and gentlemen, dear customers and interested parties !

At the time of publication of our product catalog 2023 (with about 2830 products and 419 new listings), our general life has become more uncertain and burdensome. Many new factors are influencing the economy, the stability of Europe and our everyday lives. Massively rising raw material and energy prices, significantly extended times in the supply chain, fears created by the Russia-Ukraine war and the associated inflation on an unimagined scale, as well as interest rate increases present us with enormous challenges that must be overcome.

We must also not ignore the corona pandemic, as the end is not yet in sight, and the effects are also being felt in the personal and economic spheres.

Only through an optimistic and combative attitude, we can maintain our economic performance, our basic social order and our social systems.

**"Always stay positive and optimistic,  
always keep fighting and never give up!"**

**„Immer positiv und optimistisch bleiben,  
immer weiter kämpfen und niemals aufgeben!“**

Sarkis Otyan (1939 – 2022)

Our focus and efforts are to continue to maintain our services at the highest level and to constantly improve. We achieve this with market-driven adjustments and the most intensive efforts to ensure that these factors do not influence the business relationship.

We have learned to keep our company "FIT". Despite difficult conditions, we were able to continue our growth of over 20% from 2019 to 2020 in 2021 due to ongoing optimisation.

Top motivated employees, an adaptable organisation, as well as a sustainable development of our digitisation strategy, essentially form the basis of our performance.

We are a "fit" company with a powerful organisation and top motivated employees!

In this way, we ensure:

- » best service and qualified expert advice
- » continued maximum availability
- » Top quality
- » a sustainable range
- » long-term and stable partnerships

We received outstanding feedback through the 2022 customer survey. A recommendation rate of over 99% (with approximately 2.000 qualified customer responses) speaks volumes.

We continue to monitor ongoing developments with prudence and care so that we can continue to shape our work actively and in line with the market.

Flexibility and agility are constant companions in our everyday work.

**Many thanks to our employees! Who have helped to shape everything, who have supported everything and who have given their best.** We cannot appreciate enough the dedication, trust and loyalty of each individual.

**Many thanks to our customers and partners! Who, despite the uncertainty, have pushed and further expanded the cooperation and remain loyal to us.** Your trust in our service, our competencies, the ability to deliver, the products and services contribute significantly to our success.

Our plans for the future remain ambitious and growth-oriented. Based on our core values of sustainability, loyalty and trust, we will take further steps to invest in the intensive expansion of market development in the DACH region, expand our sales throughout Europe and further develop our order-oriented manufacturing.

In addition, we will deepen our industry and target group approach!

We continue to grow! In the first half of 2022 we were able to continue our growth course (again a + of approx. 17 %), therefore we are strengthening our existing team of over 170 employees in all areas - with a focus on sales and customer service.

Above all, we wish you, your employees and families health, happiness and a good business year together.

**Ing. Hacadur Otyan**  
CEO | Chairman of the board (founder)

**Mag. Stefan Wurnig**  
CTO | Management Technology (founder)



# IR INFRAROT

incl. light frame

## EASY BETTER HEATING



### SIMPLY RETROFIT

With our infrared panels, you can quickly upgrade and optimize existing heating systems in just a few simple steps.



### EFFORTLESSLY EASY ASSEMBLY

It doesn't matter whether it's a heating panel or a light frame - assembly and installation are simple and do not require any electrical work.



### IT DOESN'T GET ANY GREENER THAN THIS

Do you have a photovoltaic system? Then heating with infrared is one of the most sustainable and ecological forms of heating available.

## TABLE OF CONTENTS

<b>3</b>	Foreword
<b>5</b>	Table of Contents
<b>7</b>	What is infrared?
<b>8</b>	Function and advantages of infrared heating
<b>10</b>	Why infrared heaters from ISOLED®?
<b>12</b>	Planning
<b>16</b>	Cost calculator

<b>18</b>	Product range
<b>24</b>	LED light frame
<b>26</b>	LED controller
<b>30</b>	Panel assembly instructions
<b>32</b>	Assembly instructions light frame
<b>34</b>	Frequently asked questions



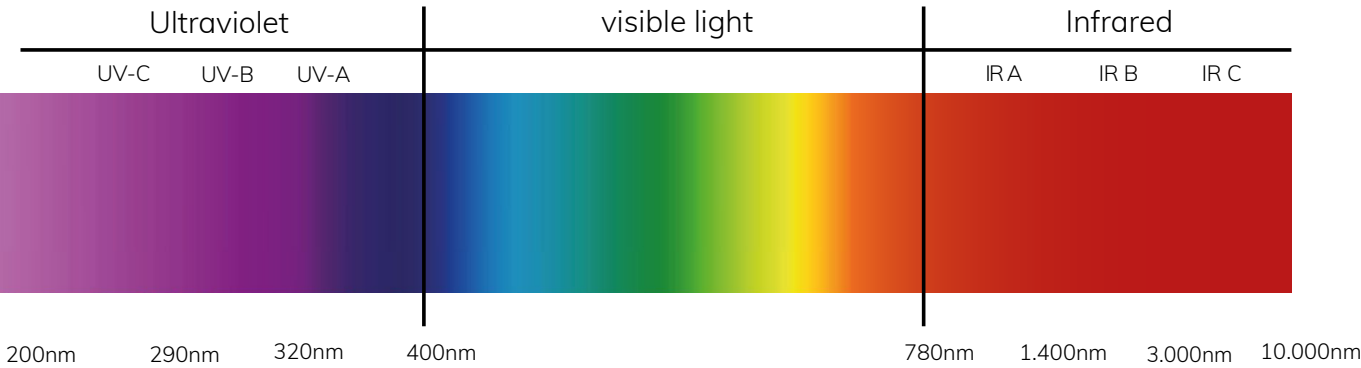
ISOLED Infrared

What is infrared?

The Latin component of the name "infra" means "below", so infrared is strictly speaking "below red". This refers to its frequency within the electromagnetic spectrum. Besides the colors visible to humans, which are within the spectrum, the low-frequency UV light as well as the high-frequency infrared radiation is invisible to humans. However, this does not mean that we do not perceive infrared radiation: For example, the cosy warmth of a tiled stove or the warming rays of the sun on the skin on a cold winter's

day are just a few examples of how we perceive its warmth as pleasant in nature and in everyday life.

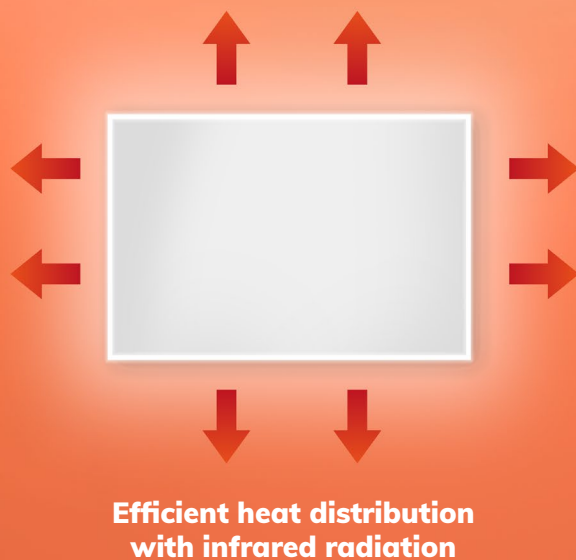
In contrast to UV radiation, infrared radiation is not harmful to us. For our infrared wall heaters as well as infrared heating panels, infrared C, that is far infrared radiation, is used in which people can stay absolutely safely without restriction.



Infrared	780 nm	in the spectral range between visible light and the longer wavelength terahertz radiation	Frequency range from 300 GHz to 400 THz
----------	--------	---	---

# IR INFRAROT

incl. light frame



Inefficient heat distribution with convection



## How does infrared heating work?

In general, infrared heating panels consist of a heating element through which electricity flows and a housing. At the same time, this heating element is an electrical resistance: In principle, 100% of the electrical energy is converted into heat and radiated in the form of infrared radiation.

This has many advantages compared to the widely used convection heating. With an infrared panel, the ambient air is not heated first, which can lead to air and dust turbulence and a very uneven temperature distribution in the room, but it has a direct effect on objects and people in the room. The heat is stored by the objects and walls of the room, which is why even when ventilating the room does not immediately cool down completely. This in turn has the pleasant side effect of effectively reducing and combating mold, as damp walls are dried by the infrared panels.

To determine how efficient an infrared heating panel is, it is worth looking less at the wattage and more at the radiation efficiency. It describes how much of the electrical energy supplied is actually delivered to the surfaces of the room as infrared radiation power.

One of the highest radiation efficiencies on the market!

# ADVANTAGES OF INFRARED HEATING



**LOW  
INVESTMENT COSTS**



**NO MAINTENANCE  
COSTS**



**FLEXIBLE AND SPACE-  
SAVING USE**



**PLEASANT  
INDOOR CLIMATE**



**FIGHTS AND PREVENTS  
MOULD GROWTH**



**INDIVIDUAL DESIGN**



**SIMPLE SELF-ASSEMBLY**



**ALMOST NO AIR AND  
DUST TURBULENCE**





## Why infrared heating panels from ISOLED®?

As experts in LED products and infrared panels, we stand for quality, which is why our infrared heaters are manufactured exclusively in Austria. We offer you first-class service, top advice and provide every new customer with a personal contact person. We also place special emphasis on high product availability and fast delivery

ISOLED heating panels are characterized by their high quality reflective insulation and special powder coating, which allows them to achieve an emissivity of 0.94. They also produce a remarkable radiation efficiency, making it one of the best on the market!



### Our heating panels are ÖVE certified!

Our heating panels are not only state of the art, but they combine the key benefits of electronic radiant heating:

- » » Heating cost savings of up to 50%
- » » selective heating – where the heat is needed
- » " long lifetime
- » " enormously space-saving & individually placeable

With the ÖVE certificate, the quality of our products has now been officially confirmed.

### Security as a quality factor

Since its foundation in 1883 - in a time of rapid development and spread of electrical engineering - the ÖVE Austrian Electrotechnical Association has set itself the goal of ensuring the safe use of electrotechnical devices and systems. In line with this goal, the association issued the first safety regulations for electrical engineering as early as 1889.

Today, more than 130 years after its formation, the founding goals of the ÖVE are still valid: With its core areas of electrotechnical standardization and certification, the association stands for safety and technical advancement and thus also for economic advancement. With its activities, it supports the economy in the global market and objectively and independently ensures compliance with national as well as international standards and guidelines.

## YOUR PARTNER

ISOLED® Since 2008

### Licensed partnerships



SIGNIFY = PHILIPS

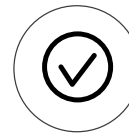




HIGHER ENERGY YIELD DUE TO  
INNOVATIVE TECHNOLOGY

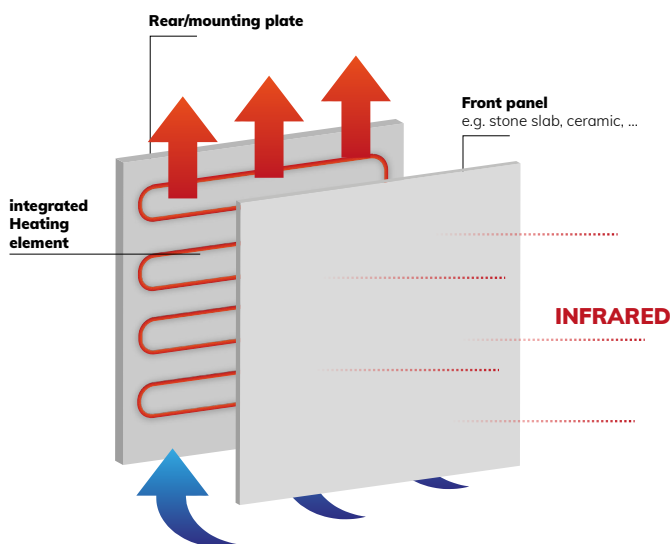


REFLECTIVE INSULATION FOR  
OPTIMAL EFFICIENCY



ONE OF THE HIGHEST RADIATION  
EFFICIENCIES ON THE MARKET!

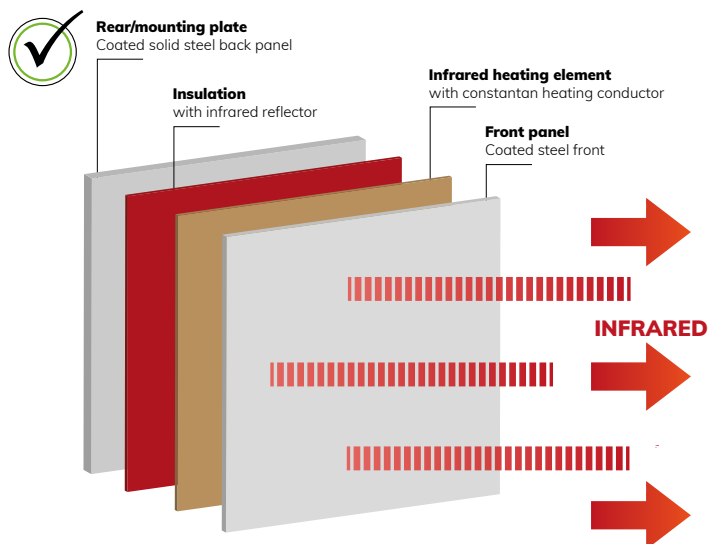
## HEATING PANELS FROM OTHER SUPPLIERS



**THE CONVECTION COMPONENT OUTWEIGHS  
THE RADIATION COMPONENT**

- ✗ lower energy efficiency
- ✗ High heat loss

## HEATING PANELS FROM ISOLED®



**OPTIMUM PERMEABILITY ENSURES HIGH  
RADIATION EFFICIENCY**

- ✓ High energy efficiency
- ✓ Hardly any heat loss

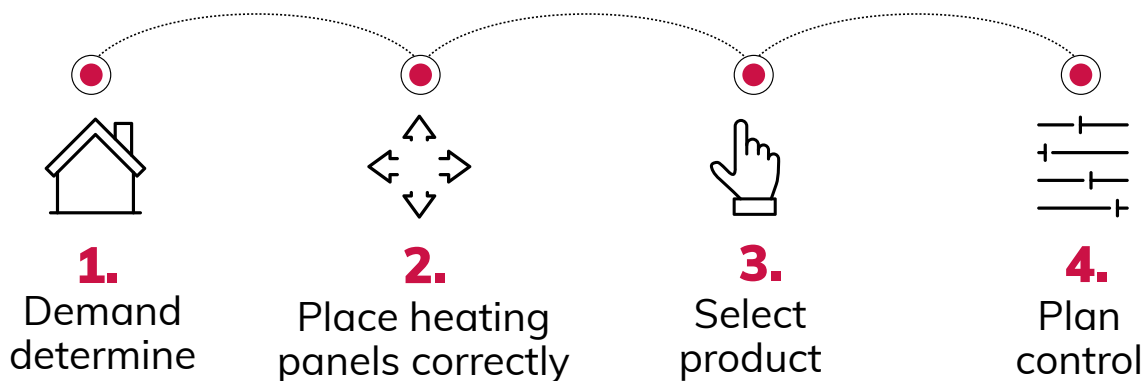
UP TO 7 YEARS WARRANTY



# HOW DO I PLAN MY INFRARED HEATING?

Which heating panels you need and where they can be placed depends on the conditions of the room or building you want to heat. In addition to the size of the room, its quality is also relevant (for example: How is the room insulated? Are there many window fronts?) and what room temperature should be reached with the heating.

## 4 easy steps







## 1. Determine demand

In order to determine the optimal dimensioning of an infrared heater for your needs, you must first calculate the heating load. With our calculator you can quickly and easily perform a heating load calculation according to DIN EN 12831.

Take the value from the overview

m<sup>2</sup> x  Watt/m<sup>2</sup> =  Watt

Required power of the infrared panel

Calculate the area of your room to be heated

no insulation	80 Watt/m <sup>2</sup>
bad insulation	63 Watt/m <sup>2</sup>
medium insulation	52 Watt/m <sup>2</sup>
good insulation	40 Watt/m <sup>2</sup>
Passive house	25 Watt/m <sup>2</sup>

**A basic room height of 2.60 m is used for the calculation.**

**PROJECTS** BUILDING DATA ROOMS EVALUATION & ORDER

### Projects

**Building project**  
 Calculated energy demand: 0,48 kW  
 Energy class buildings: C  
 Number of rooms: 1

PDF
 EDIT
 SELECT

### Building data

Year of manufacture  
**1970**

☒ Modernisation takes place

Year of modernisation  
**1994**

HWB Wert  
**80**

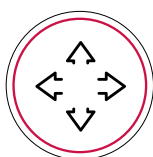
Now simply plan your rooms with your desired products

Get an instant project overview



wall mounting **1.**

**2.** ceiling installation



## 2. Place heating panels correctly

In principle, you can install the panels on the ceiling, as well as on the walls. A stand is also possible in order to place the infrared panel flexibly in the room.

**However, when placing, pay attention to the following:**

- » Do not install the infrared panels opposite reflective surfaces such as glass or windows. Due to the reflection, the heat cannot be stored well and energy is lost. The same applies to glazed tile surfaces, such as those found in some bathrooms.
- » The radiation from the panels should not be obstructed by curtains or furniture that is too close together, such as a couch.
- » In older buildings or rooms with a damp outer wall, installation on the inner wall is a good idea. As a result, the outer wall is directly irradiated and dried.
- » If you choose to mount the infrared panel on the ceiling, do not position it directly above a seating area. Some find the direct radiation from above unpleasant.



## 3. Choose product

Once you have determined your needs and found a suitable position for your heating panel, you now have to decide: square, oblong, small or large? In our assortment you will definitely find an infrared panel according to your imagination.

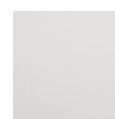
### PREMIUM

With our panel assortment you are flexible: We offer you a diverse range of sizes and of course there are also matching ISOLED light frames.

#### Size in mm

320x520	600x600	625x625	500x800	320x1500
600x900	500x1200	600x1200	900x1000	600x1500

#### surface



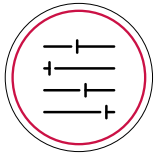
base

#### Accessories



Light frame





## 4. Planning the control

The control system that is best suited for your heating solution depends primarily on how many infrared heating panels you are using. If you want to control several panels, our room thermostats are suitable in combination with our switching actuators (also flush-mounted).

### How does a thermostat work?

In principle, a thermostat compares actual and set temperature. This means that if the actual temperature is lower than the target temperature, the infrared heater switches on until the specified target temperature is reached.

Thermostats have various functions for optimized heating operation for individual needs, e.g.:

- » Night reduction
- » Daily or weekly programs
- » "open window" - function
- » Party mode
- » Frost monitor

With the daily or weekly program, you can configure exactly what temperature you want your rooms to have at what time. For example, it can be set that at 7:30 when leaving the house, the infrared panel stops heating and the temperature is lowered by 4°C as long as the apartment is empty. These daily programs significantly reduce the switch-on time of the infrared heater, which has a positive impact on electricity consumption.

Control via a SmartHome system is particularly practical for this, as the settings of the infrared heating can be accessed from anywhere and changes can be made if necessary.

### Place thermostats correctly

Not only the placement of the infrared panels, but also the thermostat is essential for efficient heating. Because: the temperature is measured where the room thermostat is placed.

Therefore, care should be taken to ensure that the thermostat is not too close to the heater or other heat sources. Otherwise the temperature measurement of the thermostat can be falsified and the desired room climate cannot be achieved. The same applies to very cool places like window sills.

Unsuitable places for a thermostat are also

- » Places which are permanently exposed to strong solar radiation
- » behind curtains
- » in or behind furniture



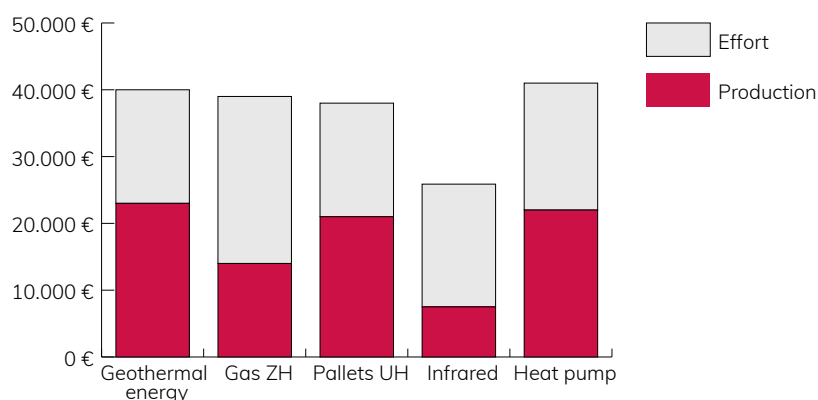
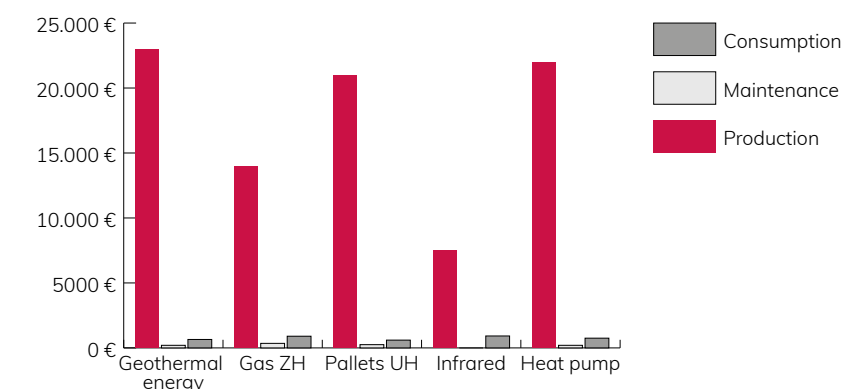
# COST CALCULATOR

Heating with electricity has a bad reputation and is considered to be very expensive. However, with infrared heating panels it is possible to heat efficiently and inexpensively. The investment in infrared pays off in several ways, because compared to conventional heating systems, the acquisition costs are significantly lower (up to 70%) and there are no maintenance or additional costs.

In connection with a photovoltaic or wind system, heating with infrared is also 100% ecological.



**Save up to 37%  
on costs**



**Get an idea for yourself with our heating cost calculator!**

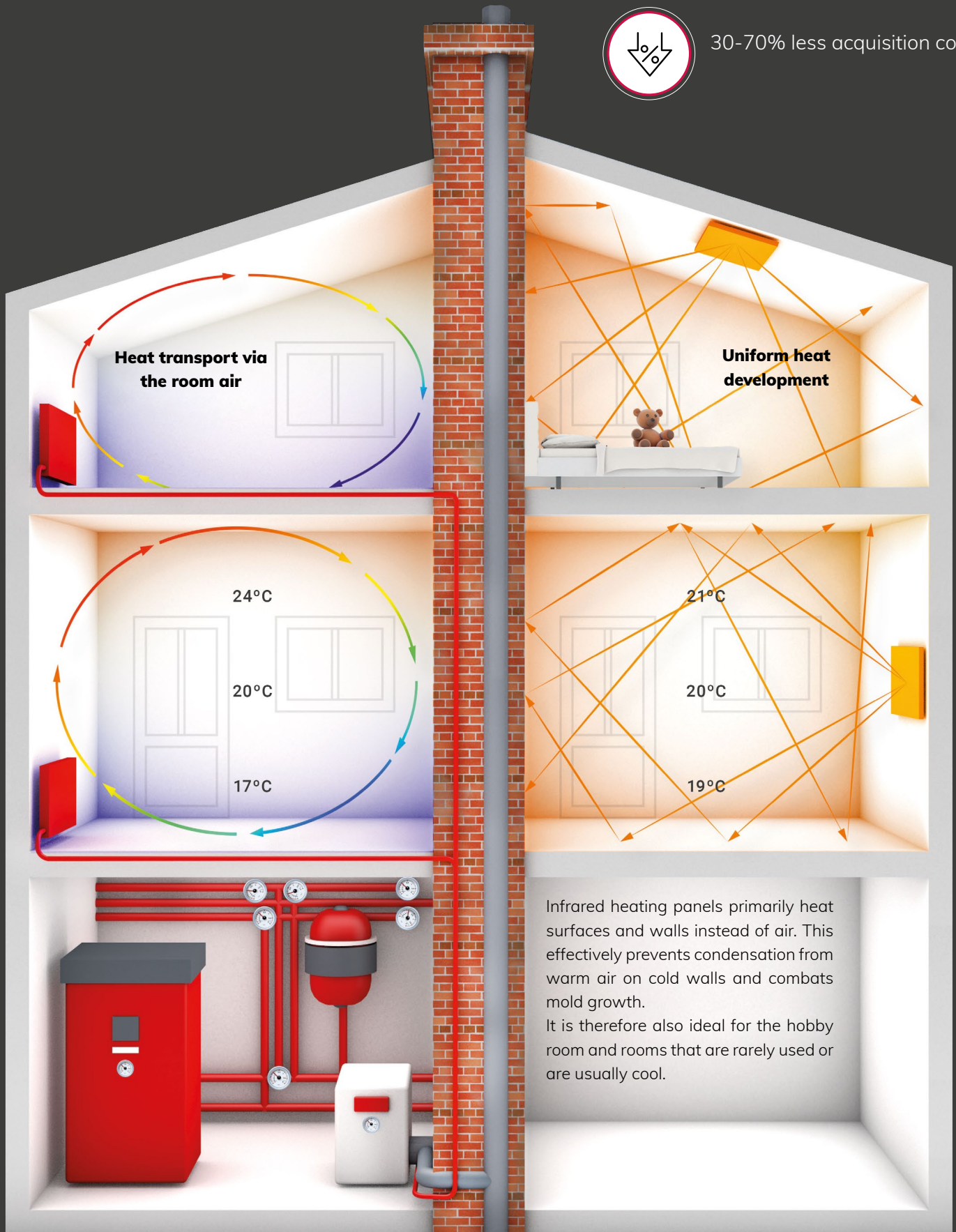
ENTER VALUES HERE	BUILDING TYPE	ANNUAL COSTS
Heating days per year <input type="text" value="210"/>	Passive house	<input type="text"/>
Heating hours per day <input type="text" value="5"/>	Lowest energy building	<input type="text"/>
Electricity price per kWh <input type="text" value="0,20"/>	New building (low energy building) (brick, solid wood, timber frame, aerated concrete)	<input type="text"/>
Area in m² <input type="text" value="120"/>	New building standard 2000-2015	<input type="text"/>
<input type="button" value="Calculate"/>	Existing building year -2000 Standard (brick, solid wood, timber frame, aerated concrete)	<input type="text"/>
	Average stock 1950-1970	<input type="text"/>
	Supplementary or transitional heating	<input type="text"/>
	Winter garden	<input type="text"/>
	Workshop	<input type="text"/>



No service/maintenance costs



30-70% less acquisition cost





Living room



Radio thermostat



Workplace

## Infrared panels from ISOLED® - Efficient, space-saving and easy to convert

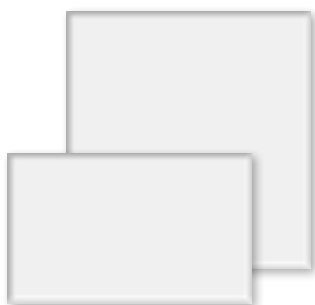
"Not only the products, but also great delivery times and fast returns processing convinced us of ISOLED®."

Feedback from customer survey 2022

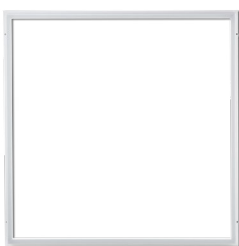


# INFRARED WITH LIGHT FRAME

CUSTOMISED LIGHT SOLUTIONS



**PAGE 20**  
Infrared Panel  
Premium



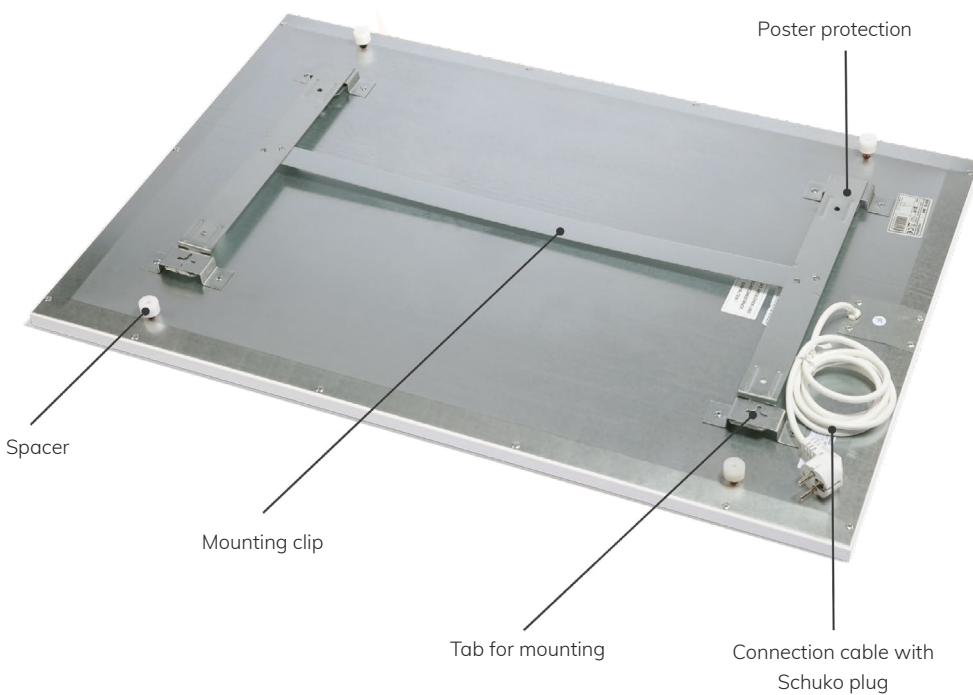
**PAGE 22**  
LED light frame



**PAGE 24**  
LED controller



**Excellent efficiency due to the lightly textured powder-coated surface optimized for thermal radiation**



**145**

115895

Light frame 115905

520 mm

**300**

ALSO SUITABLE FOR 60  
CM GRID CEILING

115896

Light frame 115906

Mounting frame 115921

592 mm

**320**

ALSO SUITABLE FOR  
62.5 CM GRID CEILING

115897

612 mm

**705**

115902

Light frame 115912

Mounting frame 115922

1.192 mm

**400**

115899

Light frame 115909

1.500 mm

**905**

115903

Light frame 115913

1.000 mm

**ALWAYS THE  
RIGHT SIZE FOR  
YOUR PROJECT**

**610**

115901

Light frame 115911

1.192 mm

**460**

115900

Light frame 115910

892 mm

**905L**

115904

Light frame 115914

1.500 mm

**350**

115898

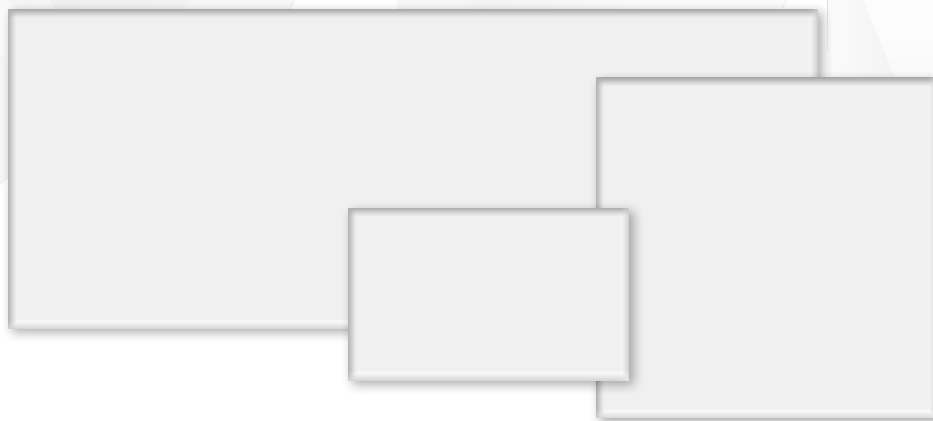
Light frame 115908

800 mm



# INFRARED PANELS

## INFRARED HEATING WITH LIGHT



### PERFORMANCE FEATURES

<b>Surface:</b>	glossy textured, powder coated
<b>Color:</b>	white - RAL 9003
<b>Voltage:</b>	230 Volt
<b>Surface temperature:</b>	approx. 85° C to 90° C
<b>Protection class:</b>	IP44
<b>Power plug/cable:</b>	Connection cable with Schuko plug
<b>Assembly:</b>	Mounting clip



### OVERVIEW

item no.No.	Model	Nominal power W	Weight kg	Ampere	Dimensions L   W   H mm	Light frame
<a href="#">115895</a>	Premium 145	137	4,20	0,60	500 x 320 x 18	115905
<a href="#">115896</a>	Premium 300	285	7,00	1,24	592 x 592 x 18	115906
<a href="#">115897</a>	Premium 320	305	7,40	1,33	612 x 612 x 18	-
<a href="#">115898</a>	Premium 350	332	8,50	1,44	800 x 500 x 18	115908
<a href="#">115899</a>	Premium 400	380	9,70	1,65	1.500 x 320 x 18	115909
<a href="#">115900</a>	Premium 460	437	10,00	1,90	892 x 592 x 18	115910
<a href="#">115901</a>	Premium 610	580	12,00	2,52	1.192 x 500 x 18	115911
<a href="#">115902</a>	Premium 705	670	13,50	2,91	1.192 x 592 x 18	115912
<a href="#">115903</a>	Premium 905	860	16,50	3,74	1.000 x 900 x 18	115913
<a href="#">115904</a>	Premium 905L	860	16,20	3,74	1.500 x 592 x 18	115914

**145**

**Dimensions**

L: 500 mm | W: 320 mm | H: 18 mm

Active power: 137 W

Power: 0.60 A

Weight: 4,20 kg

**115895**

**LIGHT FRAME 115905**

**300**

**Dimensions**

L: 592 mm | W: 592 mm | H: 18 mm

Active power: 285 W

Power: 1.24 A

Weight: 7,00 kg

ALSO SUITABLE FOR 60 CM GRID CEILING

**115896**

**LIGHT FRAME 115906**

**MOUNTING FRAME 115921**

**320**

**Dimensions**

L: 612 mm | W: 612 mm | H: 18 mm

Active power: 305 W

power: 1.33 A

Weight: 7,40 kg

ALSO SUITABLE FOR 62.5 CM GRID CEILING

**115897**

**350**

**Dimensions**

L: 800 mm | W: 500 mm | H: 18 mm

Active power: 332 W

Power: 1.44 A

Weight: 8,50 kg

**115898**

**LIGHT FRAME 115908**

**400**

**Dimensions**

L: 1.500 mm | W: 320 mm | H: 18 mm

Active power: 380 W

power: 1.65 A

Weight: 9,70 kg

**115899**

**LIGHT FRAME 115909**

**460**

**Dimensions**

L: 892 mm | W: 592 mm | H: 18 mm

Active power: 437 W

Power: 1.90 A

weight: 10,00 kg

**115900**

**LIGHT FRAME 115910**

**610**

**Dimensions**

L: 1.192 mm | W: 500 mm | H: 18 mm

Active power: 580 W

Power: 2.52 A

Weight: 12,00 kg

**115901**

**LIGHT FRAME 115911**

**705**

**Dimensions**

L: 1.192 mm | W: 592 mm | H: 18 mm

Active power: 670 W

Power: 32.91 A

Weight: 13,50 kg

**115902**

**LIGHT FRAME 115912**

**INSTALLATION FRAME 115922**

**905**

**Dimensions**

L: 1.000 mm | W: 900 mm | H: 18 mm

Active power: 860 W

Power: 3.74 A

Weight: 16,50 kg

**115903**

**LIGHT FRAME 115913**

**905L**

**Dimensions**

L: 1.500 mm | W: 592 mm | H: 18 mm

Active power: 860 W

Power: 3.74 A

Weight: 16,20 kg

**115904**

**LIGHT FRAME 115914**



# LED LIGHT FRAME

## INFRARED HEATING WITH LIGHT



With the LED light frame from ISOLED® you can also transform a pleasantly warm infrared heater into a pleasant light source for the living room, office or bathroom! Our lighting frame allows color temperatures from 1.900 stepless to 4.000 Kelvin. Depending on the size of the heating panel, the light frame reaches 3.100 to 7.100 lumens. The lighting can be used independently of the infrared heating and is dimmable. Due to our innovative design and advanced LED technology, the life of the LED light strip is unaffected by the heat of the heater.

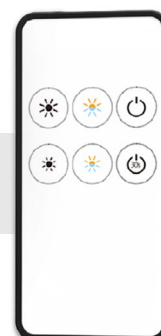
The LED light frames are available for all infrared panel sizes. The light frames are supplied ready to plug in, no specialist electrical work is required for installation. Electrotechnically instructed persons can carry out a quick and safe assembly.

### PERFORMANCE FEATURES

<b>Material Profile:</b>	Aluminum white anodized light frame
<b>Material cover:</b>	Plastic opal white
<b>Voltage:</b>	220-240V AC
<b>CRI:</b>	>92
<b>Light temperature:</b>	1.900-4.000 Kelvin



included  
remote control



**145**

**Dimensions**

L: 576 mm | W: 376 mm | H: 25+18 mm

Active power: 36 W

Luminous flux: 2.500 lm

[115905](#)

**350**

**Dimensions**

L: 856 mm | W: 556 mm | H: 25+18 mm

Active power: 54 W

Luminous flux: 3.650 lm

[115908](#)

**460**

**Dimensions**

L: 948 mm | W: 648 mm | H: 25+18 mm

Active power: 62 W

Luminous flux: 4.150 lm

[115910](#)

**705**

**Dimensions**

L: 1.248 mm | W: 648 mm | H: 25+18 mm

Active power: 74 W

Luminous flux: 4.950 lm

[115912](#)

**905L**

**Dimensions**

L: 1.556 mm | W: 648 mm | H: 25+18 mm

Active power: 86 W

Luminous flux: 5.750 lm

[115914](#)

**300**

**Dimensions**

L: 648 mm | W: 648 mm | H: 25+18 mm

Active power: 50 W

Luminous flux: 3.450 lm

[115906](#)

**400**

**Dimensions**

L: 1.556 mm | W: 376 mm | H: 25+18 mm

Active power: 75 W

Luminous flux: 5.000 lm

[115909](#)

**610**

**Dimensions**

L: 1.248 mm | W: 556 mm | H: 25+18 mm

Active power: 70 W

Luminous flux: 4.700 lm

[115911](#)

**905**

**Dimensions**

L: 1.056 mm | W: 956 mm | H: 25+18 mm

Active power: 78 W

Luminous flux: 5.250 lm

[115913](#)

**Compatible with LED light frame**



[113570](#)

Sys-Pro dynamic white 4 zones remote control with 4 scene memories



[114446](#)

Sys-Pro dynamic white 4 zones remote control with 3 scene memories



[114447](#)

Sys-Pro dynamic white 1 zone remote control Slide



[114448](#)

Sys-Pro dynamic white 1 zones recessed controller remote control with battery



[114531](#)

Sys-Pro dynamic white 1 zone table remote control, black



[114580](#)

Sys-Pro dynamic white 1 zone surface-mounted touch remote control with battery



[114450](#)

Sys-Pro dynamic white 4 zones built-in touch remote control + DMX output, black, 230V

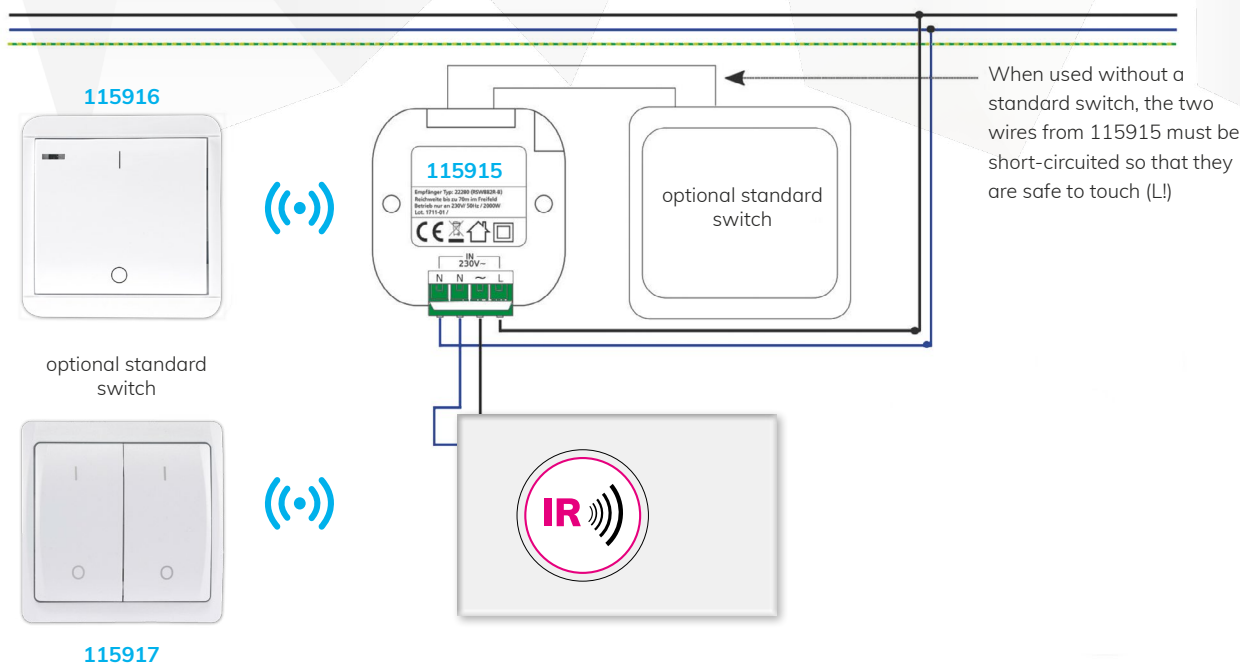


[114449](#)

Sys-Pro dynamic white 4 zones built-in touch remote control + DMX output, white, 230V

# LED CONTROLLER

## INFRARED HEATING WITH LIGHT



### IR-PANEL CONTROL 230V switching relay with radio and/or switching input, max. 2000W

**115915**

Radio receiver for easy retrofitting for your light switches. Simply connect behind the switch in the cavity wall box and avoid the hassle of laying cables. This radio receiver enables the connected lights/lamps to be additionally switched with one of the radio transmitters. (1-way switch / 2-way switch).

#### Technical details

- » LED function indicator (in housing, not visible from outside)
- » automatic adjustment to avoid overlapping of the other frequencies
- » for max. 10 channels
- » LED display
- » Frequency: 433.92 MHz
- » max. 2000 W (resistive load), 300 W (inductive load)
- » Operation at 230V / 50Hz
- » fits in standard flush-mounted boxes
- » Dimensions: 49x49x25mm
- » Switching receiver requires phase & neutral conductor for connection



### **IR-PANEL CONTROL wireless wall transmitter, battery operated (CR2032 not included)**

**115916**

Matching 1-way wall transmitter (radio switch) for the radio receiver 115915. The wall switch does not require a 230V connection. The switch is powered by a CR2032 battery.

#### **Technical details**

- » switches up to 10 receivers in a group
- » LED function indicator (in housing, not visible from outside)
- » automatic adjustment to avoid overlapping of the other frequencies
- » Frequency: 433.92 MHz
- » Range max. 70m (clear view)
- » Battery: CR2032 (not included)
- » Mounting: Surface mount
- » Dimensions: 80x80x12mm
- » Selectable switch off after 15/60/180/300sec.
- » IP20, for indoor use



### **IR-PANEL CONTROL 2-way radio wall transmitter, battery operated (A23 not included)**

**115917**

Matching 2-way wall transmitter (radio switch) for the radio receiver 115915. The wall switch does not require a 230V connection. The switch is powered by an A23 battery.

#### **Technical details**

- » Switches up to 20 receivers in two groups of 10 each
- » LED function indicator (in housing, not visible from outside)
- » automatic adjustment to avoid overlapping of the other frequencies
- » Frequency: 433.92 MHz
- » Range max. 70m (clear view)
- » Battery: A23 (not included)
- » Mounting: Surface mount
- » Dimensions: 80x80x20mm
- » IP20, for indoor use

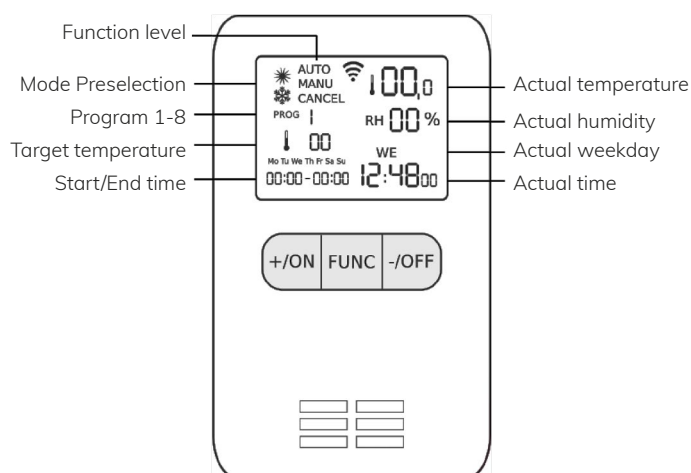


## IR-PANEL CONTROL wireless thermal switch, programmable, battery operated (2xAAA not included) 115918

From now on you can also control the temperature. Many different setting options are possible, such as heating or cooling preselection, up to 8 different programs for weekly or daily settings, each with an individual temperature, or manual switching of the receiver. Additional display of the humidity in the display.

### Technical details

- » Up to 8 individual daily / weekly programs
- » Manual operation (ON/OFF) for existing receivers
- » Shows the current temperature & humidity
- » Temperature check (approx. every 10 sec.)
- » Compact design, HxWxD 100x64x16mm
- » Operation with 2x micro batteries AAA (not included)
- » Rear hanger for wall mounting and stand for standing



### Notice:

The Ecodesign Directive EU 2015/1188 requires the use of room temperature controls with weekday regulation and adaptive regulation of the start of heating for the operation of electric individual room heaters!





### **IR-PANEL CONTROL wireless socket, max. 2300W, incl. switch button**

**115919**

Wireless socket in fascinating compact design and with up to 70m range. Suitable switches include 115917 1-way radio wall transmitter, 115916 2-way radio wall transmitter, 115920 - PIR- motion detector, 115918 thermal switch.

#### **Technical details**

- » Simple teach-in function (learns the appropriate code from the transmitter and remembers it)
- » LED function display for ON/OFF and status of the learning function
- » Distance to the transmitter max. 70m (free area)
- » Frequency: 433.92 MHz
- » Max. switching power: 2300W
- » Connection to 230V / 50Hz
- » Integr. Overload protection
- » Dimensions: Ø44x72mm (with base), inserted 34mm deep.



### **IR-PANEL CONTROL wireless motion detector PIR, battery operated (2xAAA not included)**

**115920**

Motion detector (1-gang wall transmitter) for the radio receivers. No connection via 230V is necessary.

#### **Technical details**

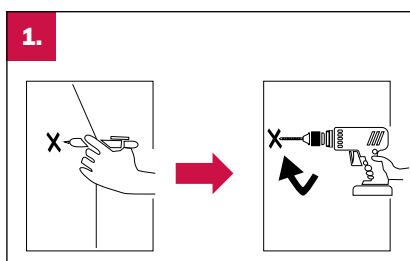
- » IP20 - for dry indoor use
- » Simple learning function (learns the appropriate code from the receiver and will remember it)
- » Distance to receiver max. 30m (free area)
- » Duty cycle 6s, 15s, 1m, 5m
- » Detection selectable 24h or only at night (twilight sensor)
- » Range max. 8m, detection angle max. 90°
- » Frequency: 433.92 MHz
- » Cover dimensions: 80x80mm, frame height 12mm, with PIR 30mm
- » Operation with 2x AAA Micro batteries (not included)

# MOUNTING SYSTEM

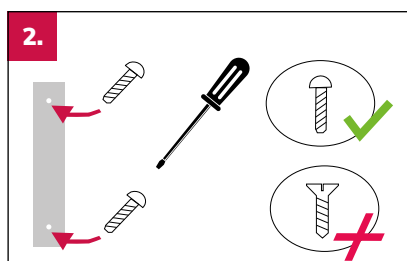


## INSTRUCTIONS Wall mounting with mounting clip

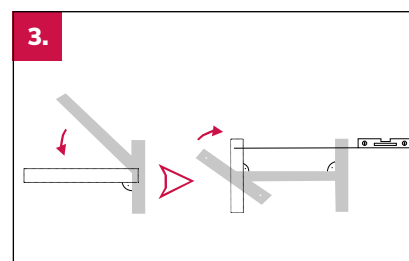
The mounting clip consists of 3 parts: part 1 = short rail, part 2 = short rail, part 3 = long rail (connection of part 1+2)



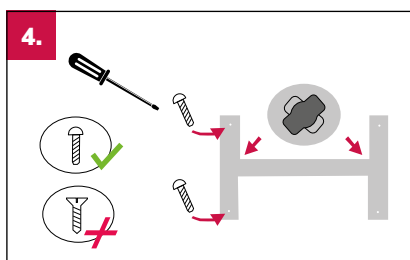
**1.** Mark the two drill holes for part 1 of the mounting brace at the planned mounting location. Drill the holes at the marked points (depending on the subsurface: insert dowels if necessary).



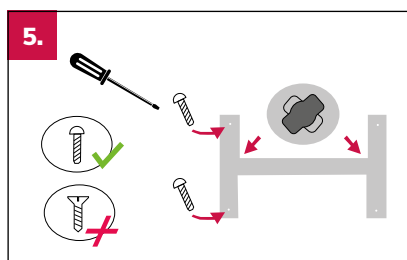
**2.** Fasten part 1 of the mounting bracket with screws. Screws with flat screw heads are to be used (no countersunk screws!). Depending on the surface, the appropriate fastening material (not included in the scope of delivery) must be used for installation. When installing the heating panel in landscape format, it must be ensured that the tabs of the mounting clip marked with an X (see sketch of the mounting clip) are aligned upwards.



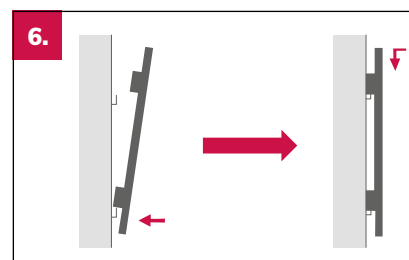
**3.** Hook part 3 of the mounting bracket into the rail you just installed and turn it so that part 3 is positioned at right angles to part 1. Hook part 2 of the mounting clip into part 3 of the mounting clip and twist it as well, taking into account that the drill holes of part 1 and part 2 are aligned straight with a spirit level.



**4.** Mark the two drill holes for part 2 of the mounting clip at the mounting location. Drill the holes at the marked points (depending on the subsurface: insert dowels if necessary).



**5.** Fasten part 2 of the mounting bracket with screws. Screws with flat screw heads are to be used (no countersunk screws!).



**6.** The heating panel is now to be hooked in the installed mounting clip.  
**7.** As additional protection against unhooking, the heating panel can be secured with screws in the holes in the upper edge of the upper brackets (of the mounting bracket). Part 1 and Part 2 are leveled with a spirit level.

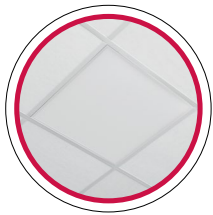
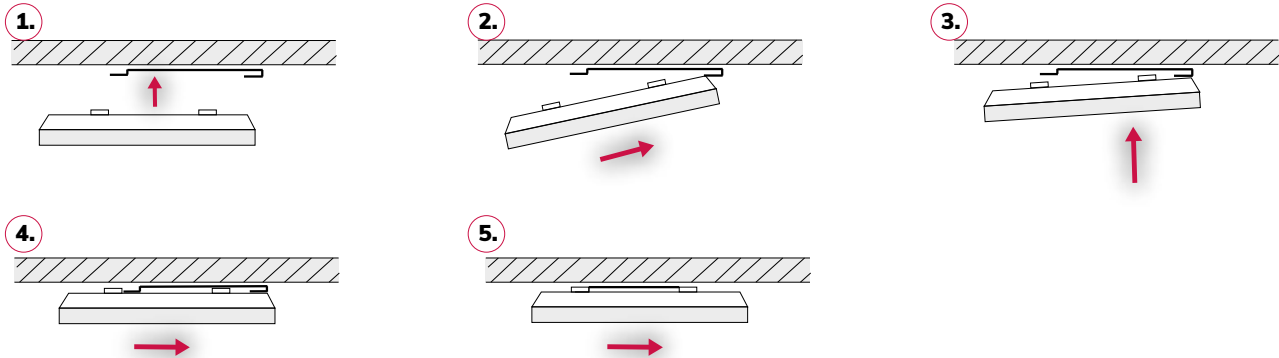


## INSTRUCTIONS

### Ceiling mounting with mounting bracket

Attach the mounting bracket to the ceiling in the same way (as for wall mounting). Then hang or insert the heating panel (see sketch) into the mounting clip and, if necessary, secure with chains or ropes.

The mounting clip consists of 3 parts: part 1 = short rail, part 2 = short rail, part 3 = long rail (connection of part 1+2)



## INSTRUCTIONS

### Ceiling mounting in grid ceilings

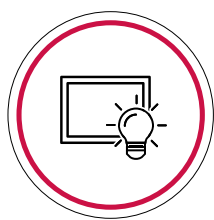
If the heating panel has a standardized dimension for grid ceilings from the common manufacturers (see table on the last page), the heating panel only needs to be inserted into the ceiling grid instead of a cassette insert.



## INSTRUCTIONS

### horizontal mounting free hanging

The heating panel can also be installed under the ceiling structure by hanging it with chains or ropes. In the case of fire construction of the ceiling, a distance of at least 5 cm must be maintained. The chains or ropes are to be fixed to the ceiling with suitable screws (depending on the substructure: insert dowels if necessary).

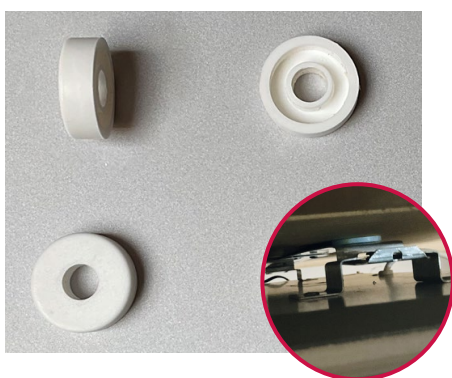


## INSTRUCTIONS

### LED light frame

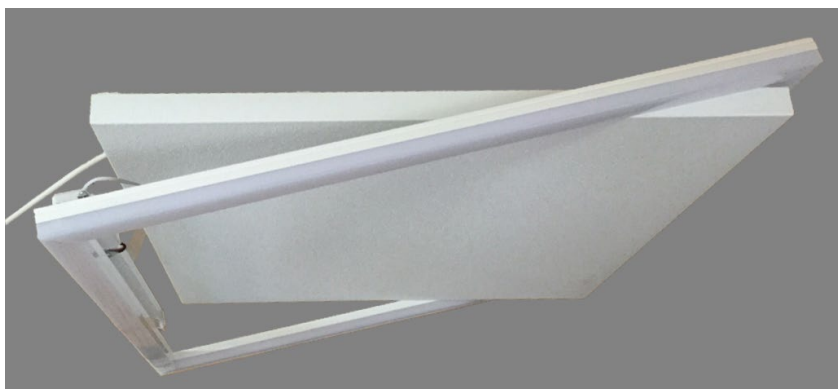
The infrared panel must be mounted before the LED light frame is installed and a corresponding 220 V power connection must be provided for the LED light frame.

After mounting the IR panel, the LED light frame can be hooked in as shown below.



#### To note:

If the ceiling is not flat, we recommend the plastic washers shown below, approx. 6 mm thick and approx. 18 mm in diameter, which are available in every hardware store, between the ceiling and the mounting bracket of the IR panel.



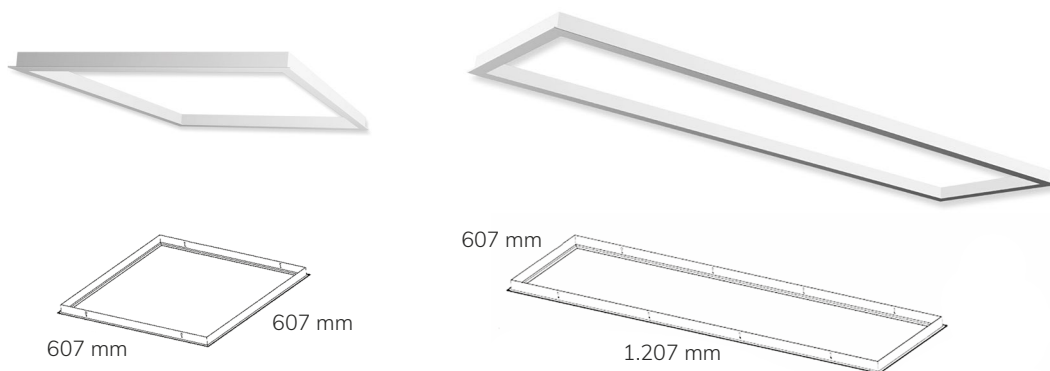
Push the frame part opposite the transformer, as flat as possible, between the ceiling and the infrared panel about 2 cm onto the infrared panel (nearly)  
Figure 1

After hanging the frame part with the transformer, swing it upwards until the transformer protruding inwards can be pushed over the back of the infrared panel. Image 2

Then the frame part of the other side falls onto the corner supports.







### Mounting frame 300

114613

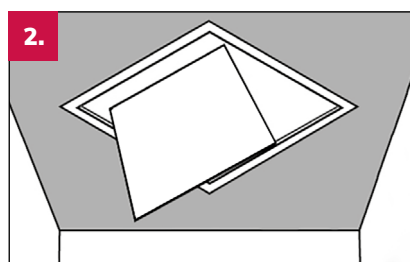
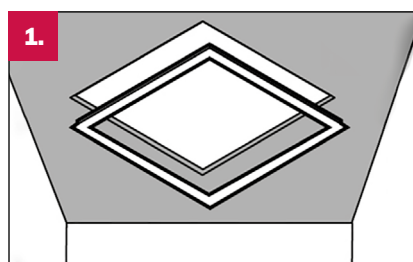
### Mounting frame 600

114611



## INSTRUCTIONS

### Recessed mounting with frame



# FREQUENT QUESTIONS



## General information about infrared heating:

### Can the whole house be heated with infrared?

Yes. If you heat a house or apartment with infrared, you have a lot lower acquisition costs than would be the case with geothermal energy, gas, pellets or a heat pump. With good insulation, power consumption is also kept within limits.

Each room must be considered individually. It makes a big difference whether the bathroom, the living room, the bedroom or a winter garden is to be heated with infrared.

### Does infrared heating make sense if the insulation is weak?

It is clear that more energy is required. You can estimate your costs with our heating cost calculator. If your building is older and/or the outer wall is damp, it is recommended to install the infrared heater on the inner wall. This increases the surface

temperature of the outer wall due to irradiation. The drying improves the thermal insulation because the dew point is located further to the outside.

### Are there rooms where infrared heating is not useful?

The better the surrounding bodies absorb the infrared radiation, the more effectively the infrared heating works. In a bathroom with glossy/glazed tiles, infrared heating is less effective than in a bathroom with matte/rough tiles. In addition, window surfaces directly opposite the heater should be

avoided. Glass does not store heat but reflects it. The thermal radiation has to cover a longer distance before it hits the next wall and loses energy.

### What is the difference between infrared heating and conventional heating?

Conventional convection heating such as underfloor heating or a radiator heats the air. The infrared heater heats objects. Heated objects such as the wall or the floor also give off this heat themselves. This results in a more pleasant indoor

climate. A quick airing and the room has already cooled down? This cannot happen with infrared heating.

### Is infrared heating environmentally friendly?

Basically, it depends on what the electricity used for them is generated from, for example, hydropower, solar or even wind energy. One of the cheapest and most environmen-

tally friendly heating solutions are currently infrared heating systems in combination with a photovoltaic or wind system.

### Is the infrared heating suitable for mold control?

Yes, if the infrared heater radiates onto an exterior wall that is infested with mold, the heat will dry that wall. The dew

point moves further outwards. A dry wall is less susceptible to mold growth.

### How much does infrared heating cost per year?

This varies from room to room or type of building and depends on architectural conditions, insulation, number of infrared

panels, etc. You can use our calculator to get an idea for yourself.

### Where to place an infrared heater?

Ideally, the infrared panel is mounted in such a way that the heat radiation can radiate directly onto walls, ceilings and/or floors. Care should be taken to ensure that the panel is not covered by objects such as curtains or tables. Mounting on the wall (such as with a picture heater) has the advantage that radiation is emitted to both the ceiling and the floor. When mounted on the ceiling, however, the heater is particularly inconspicuous. In combination with our LED light frame, one panel can be used for heating and lighting at the same

time. In general, you should note that the infrared heater is not installed directly above a seat. Many people find the direct radiation from above the head unpleasant after a long time. With our practical stand, you are also mobile and can use the infrared panel wherever you need it.

## Questions about the infrared heating panel/illuminated frame from ISOLED®

### What is the radiation angle of an infrared heating panel?

Our infrared heating panels have a radiation angle of 178 degrees. This radiation angle can be felt up to an angle of 60 degrees.

### What is the maximum range of an infrared heating panel?

The heat of our infrared panels has an optimal radiation range of up to four meters. Until then, the infrared radiation should

hit the areas to be heated, such as walls, floors, ceilings.

## Do I need an electrician for the installation?

The infrared heating panel and the LED light frame are delivered ready to plug in. The installation does not require any electrical work. Electrotechnically instructed persons can carry out a quick and safe assembly.

## Is the luminous intensity of the LED light frame sufficient to illuminate a room?

Yes. That depends on the size of your room and the size of the LED light frame. Depending on the size of the infrared panel, it reaches 3100 to 7400 lumen. In addition, the LED light frame can be switched independently of the infrared panel.

## Can lighting and heating be controlled independently?

Yes, this is possible if the lighting and the panel have their own power supply. Both the panel and the light frame are supplied with their own connection plug.

## Can the LED light frame and the infrared heater be operated independently of one another with just one connection?

Yes, that is possible. At the 230V connection you can switch a radio actuator (article 115915) which is controlled by the radio room thermostat (article 115918). The transformer of the LED light frame is also connected directly to the 230V connection, parallel to the radio actuator. With the included remote control you can switch and control the dynamic white dimmer, which is located between the transformer and the illuminated frame. Good to know: Its last selected setting is saved even if the power supply is disconnected.

## Can I switch the LED light frame on and off without a wireless dimmer?

Yes, but in this case there must be an additional line to the IR panel. Use four wires instead of three and lead one to the light switch.

## What is the service life of an infrared heater?

Our infrared heaters have an average service life of up to 1000 00 heating hours. We offer up to 7 years guarantee depending on the product.



## We advise you personally!

Our professional lighting planners and consultants calculate and design the ideal LED lighting solution for your project.

**NET PRICE ITEM**

**No further discount possible**

Legal notice / Photo credits All rights reserved by FIAI Handels GmbH.

Imprint: This catalog is produced and published by ISOLED® | FIAI Handels GmbH in Egerbach 48, A-6334 Schwoich, AUSTRIA |.

Company register number FN304126w | UID number: ATU63995500

Please note that all our products and services are offered exclusively in accordance with our terms and conditions and warranty conditions. You can download these from our homepage.

Datasheets and other technical information can be found on our homepage at [www.isoled.at](http://www.isoled.at) / [www.isoled.de](http://www.isoled.de) / [www.isoled.ch](http://www.isoled.ch) / [www.isoled.hu](http://www.isoled.hu) / [www.isoled.it](http://www.isoled.it) / [www.isoled.fr](http://www.isoled.fr).

Please note: technical details in this catalog correspond to the status as at the time of printing and have been compiled based on our best knowledge. Nevertheless, we reserve the right for there to be errors and misprints. The details are provided for more detailed description of items, however are not warranted properties, unless expressly described as such. / The items contained in this catalog may be discontinued at any time by ISOLED® without replacement. / Changes for the benefit of technical progress or adjustments to modified standards or regulations remain reserved. / Photos and drawings in this catalog are examples and are not binding for supply. / FIAI GmbH accepts no liability for any non-availability of the catalog products. / FIAI Handels GmbH also is not liable for any direct, indirect, coincidental or other damages (including but not limited to lost profits, lost earnings or similar financial damages), which result from the use of information in this catalog. / Breaches of legal rights or the use of text and layout design (inc. photos) are not permitted without our permission and will be subject to legal action. / The presentation of our products is enabled through the cooperation with and permission of the owners of the environments which can be seen in the foreground of each image. We would like to express our gratitude for this..

Version 07/2022

**ISOLED® Austria Technology and Logistics Center**

**FIAI Handels GmbH | Egerbach 48 | A-6334 Schwoich | Tel: +43 5372 219999 | E-Mail: [office@isolated.at](mailto:office@isolated.at)**

ISOLED® AUSTRIA  
[www.isoled.at](http://www.isoled.at)

ISOLED® GERMANY  
[www.isoled.de](http://www.isoled.de)

ISOLED® SWITZERLAND  
[www.isoled.ch](http://www.isoled.ch)

ISOLED® FRANCE  
[www.isoled.fr](http://www.isoled.fr)

ISOLED® ITALY  
[www.isoled.it](http://www.isoled.it)

ISOLED® HUNGARIA  
[www.isoled.hu](http://www.isoled.hu)



# YOUR PARTNER

ISOLED<sup>®</sup> SINCE 2008



ISOLED<sup>®</sup> AUSTRIA  
FIAI Handels GmbH  
Egerbach 48  
A-6334 SCHWOICH  
AUSTRIA

Tel: +43 5372 219 999

Email: [office@isoled.at](mailto:office@isoled.at)  
[www.isoled.at](http://www.isoled.at)



ISOLED<sup>®</sup> GERMANY  
FIAI Trading GmbH  
Hollerweg 3  
D-85649 BRUNNTHAL  
GERMANY

Tel: +49 810 48 999 200

Email: [office@isoled.de](mailto:office@isoled.de) [www.isoled.de](http://www.isoled.de)



ISOLED<sup>®</sup> SWITZERLAND  
Allegra Swiss GmbH  
Einsiedlerstrasse 15a  
CH-8834 SCHINDELLEGI  
SWITZERLAND

Tel: +41 44 787 04 75

Email: [info@isoled.ch](mailto:info@isoled.ch)  
[www.isoled.ch](http://www.isoled.ch)

## 99 %

of our customers and partners recommend ISOLED<sup>®</sup> !

YOUR DEMAND IS OUR MOTIVATION!